

Instruction Guide

70-74 E-Body Mopar Down Tube Kit



Speedtech
PERFORMANCE

CHASSIS - SUSPENSION - PRO TOURING - AUTOCROSS - DRAG RACING - CUSTOM BUILDS

435.628.4300 SPEEDTECHPERFORMANCE.COM    

4160 S. RIVER RD, ST. GEORGE, UT 84790



Figure 1: 1970 Cuda, with Speedtech Performance ExtReme Front Sub Frame

Congratulations on the purchase of your new Speedtech Performance down bars. Use only approved and appropriately rated jack and jack stands, and be sure to take all safety precautions required to complete the job safely and correctly. If you have uncertainties, seek the assistance of a highly qualified workshop to assist you.

Read and understand all instructions thoroughly before you begin. Your main assembly and set up of your new ExtReme down bars can be done in a home garage with hand tools and basic equipment.

Speedtech enjoys seeing the progress our customers are making as they work through their builds. Join the group, [Team Speedtech](#), on Facebook and share your pictures and your story.

Speedtech Performance sends you best wishes for your project!

TABLE OF CONTENTS

1.0	GENERAL INFORMATION	3
1.1	THIS GUIDE.....	3
1.2	OVERVIEW.....	3
1.3	TOOLS.....	3
2.0	CHECK IN PARTS AND HARDWARE	4
2.1	CHECKING IN THE ORDER.....	4
3.0	GETTING STARTED	4
3.1	PREPARE.....	4
3.2	CUT INNER FENDER.....	5
4.0	FITTING THE DOWN BARS	5
4.1	INSTALL LOWER MOUNT.....	5
4.2	FIT THE BRACKETS TO THE FIREWALL.....	6
4.3	TRIM BAR TO FIT THE LOWER MOUNT AND UPPER BRACKET.....	6
4.4	WELD, FINISH, AND INSTALL.....	6
5.0	CONGRATULATIONS	7

1.0 GENERAL INFORMATION

[Back to Table of Contents](#)

1.1 THIS GUIDE

Thank you for purchasing your new Speedtech Performance ExtReme down tube kit. Read through all instructions thoroughly before beginning and take all safety precautions required to do the job carefully and correctly.

The following instructions are intended for professional installers and are guidelines only. Speedtech Performance assumes no responsibility for the installation of any of its products installed by others. If you have uncertainty, seek the assistance of a highly qualified workshop.

Installation in most cases can be installed without removing any major components. To provide the best fit and product performance, you will want to custom fit the part. If you do not have welding skills and/or access to a welder, make arrangements ahead of time to have them available during installation.

While Speedtech's ExtReme suspension systems are safer and more comfortable compared to factory suspension on the street, it is also designed to meet the needs of those intending to participate in off highway road races and autocross competitions. To achieve maximum benefit from our system, you should anticipate adjusting and tuning of the suspension to achieve optimum performance specific to the vehicle, driver, and type of racing. Some of this, such as tuning sway bars and shock settings, can be done track side through making adjustments and seeing or feeling how the car reacts to these changes. Speedtech recommends that a tire probe pyrometer and an air pressure gauge be in your track side kit.

Other adjustments, such as tuning a bump steer and caster may require specialized equipment and professional help. Speedtech's technical department can share insight on making these adjustments to help get you started.

1.2 OVERVIEW

These instructions outline the ExtReme down tube. Photos in the instruction process may vary slightly from your exact operation.

1.3 TOOLS

Installation of the Speedtech Performance down tube can be done on the floor with simple hand tools.

Additional things to have before you start:

- Loctite Red
- Grinder/Cutter
- Antiseize
- Welder
- Personal Protection Equipment

2.0 CHECK IN PARTS AND HARDWARE

[Back to Table of Contents](#)

2.1 CHECKING IN THE ORDER

Check in your order as soon as possible. To check in the order, Speedtech has provided tables which can be used as check lists, as displayed in figure 2. All bolts and nuts are NF unless otherwise noted. Hardware comes in several boxes. If you discover anything missing from your order, call your authorized dealer as soon as possible.

2.2 CHECK IN TABLES

Speedtech Performance Down Bar Kit

X	#	Description	Size
	1	Left Down Bar	
	1	Right Down Bar	
	1	Left Bracket	
	1	Right Bracket	

Hardware

	4	Socket Head Stainless Bolts	7/16" X 1 1/4"
	4	Nylock	7/16"
	8	Button Head Screws Stainless Steel	3/8"
	8	Nylock Stainless Steel	3/8"
	8	Flat Washer Stainless Steel	3/8"
	8	Flat Washer SAE	3/8"

Figure 2: Check in tables including amounts, descriptions, and sizes

3.0 GETTING STARTED

[Back to Table of Contents](#)

3.1 PREPARE

First, unpack all the components and organize them on a table with their accompanying hardware. Use the check list above. Level the car above a flat work area.

IMPORTANT: Before you continue be sure the sub frame is in its final position with all the weight on the car prior to fitting the down tubes. This includes final body panel fitment. To ensure a custom fit to your application, mock up all parts before welding. Some trimming may be required.

3.2 CUT INNER FENDER

Next, cut a hole on the inner fender for the down tube to pass through.

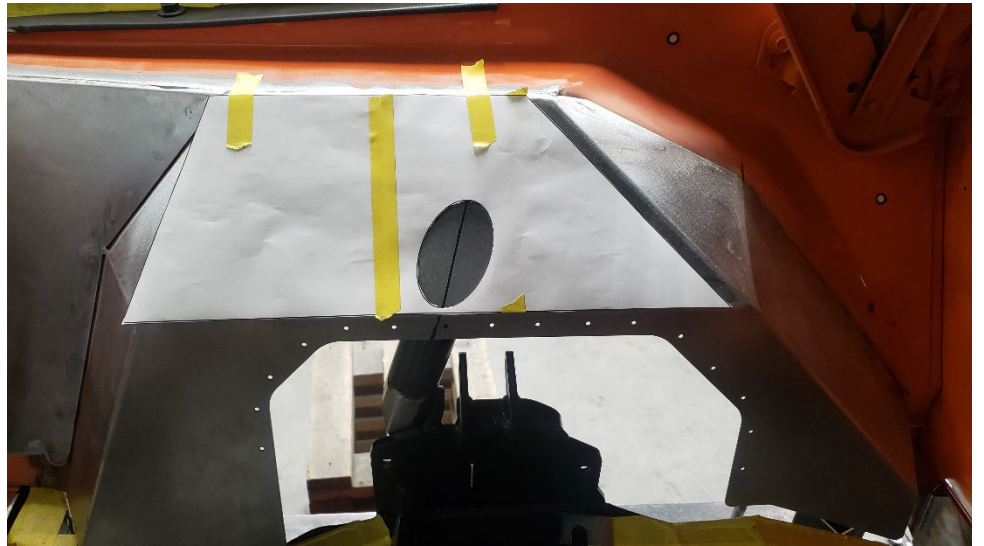


Figure 3: Cutting a hole on the inner fenders

4.0 FITTING THE DOWN BARS

[Back to Table of Contents](#)

4.1 INSTALL LOWER MOUNT

Start by bolting the lower mount to the sub frame boss in front of the shock using the supplied 7/16 x 1 1/4 socket head cap screws.



Figure 4: Lower mount

4.2 FIT THE BRACKETS TO THE FIREWALL

Hold the backing plate to the firewall, mark and drill holes for the 3/8" bolts, and mount the brackets to the firewall.

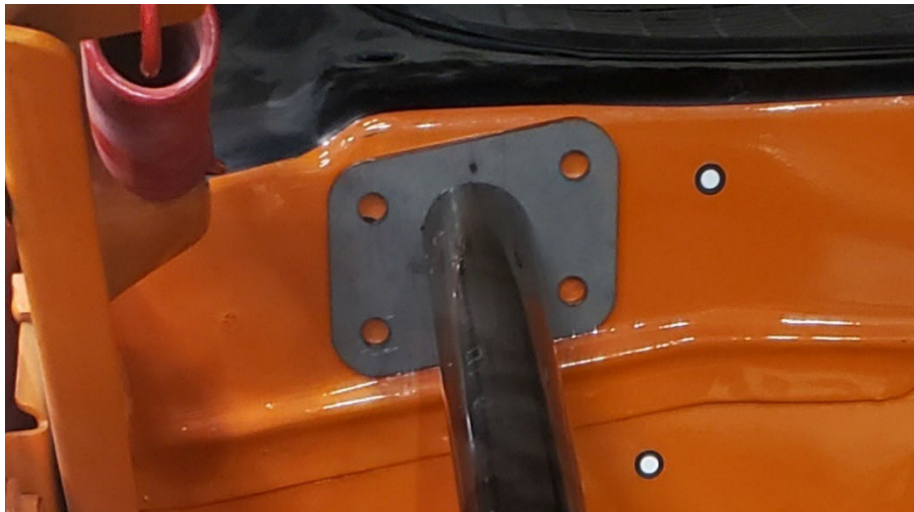


Figure 5: Lining the backing plate to the firewall to present where drilling holes is necessary

4.3 TRIM BAR TO FIT THE LOWER MOUNT AND UPPER BRACKET

Trim the down tube with the lower mount and upper bracket bolted in place so that it fits snug between the upper and lower brackets. Tack weld the bar to the mounts.

4.4 WELD, FINISH, AND INSTALL

Figure 6: Finished assembly

Be sure that all measurements are correct and double-check that all components have proper clearance. Torque all bolts to spec. Tighten all loose suspension bolts and double-check all bolts to ensure they are all tight. It is recommended you fill all grease fittings at this time. Speedtech suggests using Permatex Ultra Slick Synthetic Grease, but any



high-quality chassis grease will do. For your Sweet power rack and pinion, we recommend using Sweet or Jones brand full synthetic power steering fluid for best performance and to avoid overheating standard type fluids during performance driving situations.

Next, after tightening all bolts, remove the assembly and weld all the way around the joint at each end and let cool. Prep and coat with your choice of paint, powder coat, or other appropriate material. Reinstall the Speedtech Performance down tube into vehicle.

This concludes the instructions for the ExtReme down tube kit.

5.0 CONGRATULATIONS

[Back to Table of Contents](#)

Congratulations on completing your project! We know you will get many years of enjoyment from your project. Please join the group, [Team Speedtech](#), on Facebook. Team Speedtech is a community of customers, dealers, and factory employers that have a passion for pro touring muscle cars and are using Speedtech Performance products. You can ask questions and get advice from the group members and share your experience. Everyone enjoys seeing the videos and pictures during the progress of your project and Speedtech encourages you to share them!

Thank you for choosing Speedtech Performance and entrusting us with your down tube needs for your custom muscle cars.

Speedtech Performance, LLC
4160 S. River Rd.
St George UT, 84770
(435) 628-4300