

Instruction Guide

LS Engine Mount Adapters



Speedtech
PERFORMANCE

CHASSIS - SUSPENSION - PRO TOURING - AUTOCROSS - DRAG RACING - CUSTOM BUILDS

435.628.4300 SPEEDTECHPERFORMANCE.COM    

4160 S. RIVER RD, ST. GEORGE, UT 84790



Figure 1: 1969 Camaro features our ExtReme subframe and LS components [picture by Roger Maniscalco]

Congratulations on the purchase of your new Speedtech Performance LS engine mount adapters. Use only approved and appropriately rated jack and jack stands, and be sure to take all safety precautions required to complete the job safely and correctly. If you have uncertainties, seek the assistance of a highly qualified workshop to assist you.

Read and understand all instructions thoroughly before you begin. Your main assembly and set up of your new LS engine mount adapters can be done in a home garage with hand tools.

Speedtech enjoys seeing the progress our customers are making as they work through their builds. Join the group, [Team Speedtech](#), on Facebook and share your pictures and your story.

Speedtech Performance sends you best wishes for your project!

TABLE OF CONTENTS

1.0	GENERAL INFORMATION.....	4
1.1	THIS GUIDE	4
1.2	OVERVIEW	4
1.3	TOOLS	4
2.0	CHECK IN PARTS AND HARDWARE.....	4
2.1	CHECKING IN THE ORDER	4
2.2	CHECK IN TABLES	4
3.0	GETTING STARTED / INSTALLATION	5
3.1	LEVELING AND SUPPORT	5
3.2	INSTALLATION - PLATE	5
3.2	INSTALLATION – MOUNT	5
4.0	CONGRATULATIONS	6

1.0 GENERAL INFORMATION

[Back to Table of Contents](#)

1.1 THIS GUIDE

Thank you for purchasing your new Speedtech Performance LS engine mount adapters. Read through all instructions thoroughly before beginning and take all safety precautions required to do the job carefully and correctly.

1.2 OVERVIEW

These instructions outline the ExtReme LS engine mount adapters that will be installed with the Speedtech Performance ExtReme chassis. Photos in the instruction process may vary slightly from your exact operation.

1.3 TOOLS

Installation of the Speedtech Performance LS engine mount adapters can be done on the floor with simple hand tools.

Additional things to have before you start:

- Allen Wrench
- Socket Set
- Blue Loctite

2.0 CHECK IN PARTS AND HARDWARE

[Back to Table of Contents](#)

2.1 CHECKING IN THE ORDER

Check in your order as soon as possible. To check in the order, Speedtech has provided a table which can be used as a check list, as displayed in figure 2. All bolts and nuts are NF unless otherwise noted. Hardware comes in several boxes. If you discover anything missing from your order, call your authorized dealer as soon as possible.

2.2 CHECK IN TABLES

X	#	Description	Size
	2	Billet Adapter Plates (one left one right)	
	4	Adaptor Plater to Block Flat Head Bolt	M10x35 FHCS
	6	Adaptor Plater to Block Socket Head Cap	M10x30 SHCS
	6	Flat Washers	M10
	6	Motor Mount Bolt	3/8-24x3/4
	6	Flat Washer	3/8

Figure 2: Check in table with amounts, descriptions, and sizes

NOTE: There may be some extra hardware that was packaged that is not accounted for in the check list. The hardware kits are made to fit multiple products; hence why there may be a surplus of supplies.

3.0 GETTING STARTED / INSTALLATION

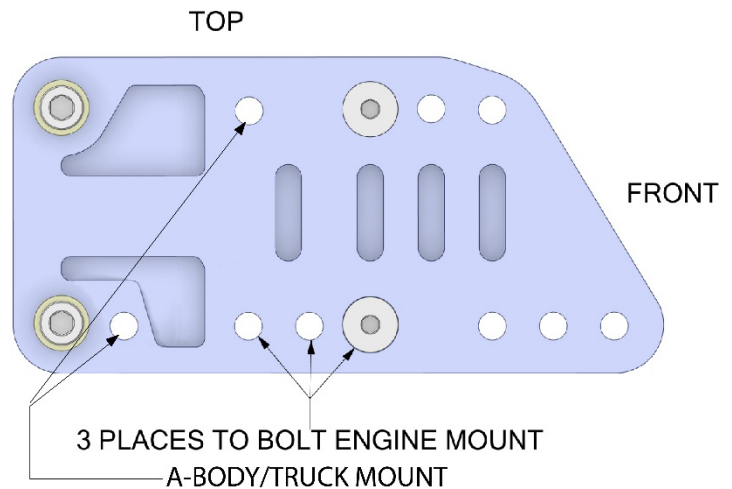
[Back to Table of Contents](#)

3.1 LEVELING AND SUPPORT

Properly support the vehicle. This can be assembled on a work bench as well. Take all necessary precautions whenever jacking up your vehicle and use safe and sturdy jack stands to support the vehicle whenever it is off the ground. Be sure to take all other safety precautions required to do the job correctly.

3.2 INSTALLATION - PLATE

- Locate the two adapter plates. They are labeled driver and passenger.
- Bolt the adapter plates onto the engine block. Use (2) SHCS with washers and (2) FHCS. Refer to the diagram for plate orientation on the block.
- On final assembly, use blue Loctite and torque to 37 ft.lb.



3.2 INSTALLATION – MOUNT

- Determine where the motor mounts need to be attached to the adapter plate for your application. There are three locations.
- Bolt the motor mount to the adapter plate using the 3/8 bolts and washers.

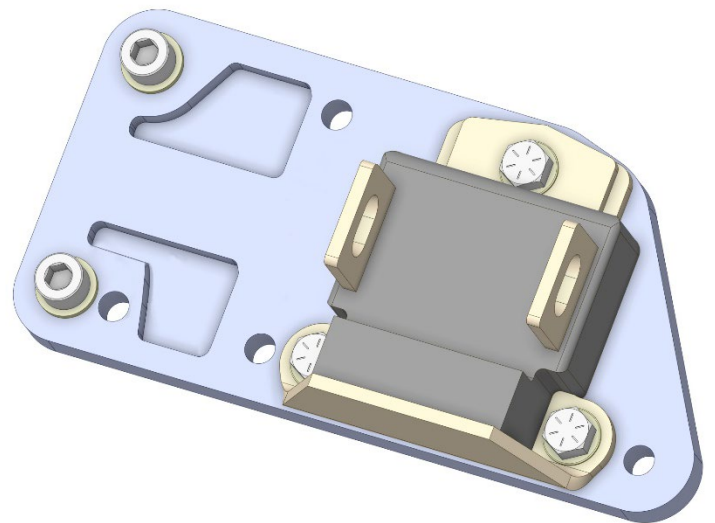
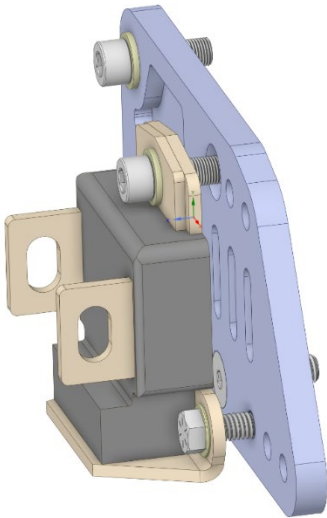


Figure 3: Two models of the installation of plates and mounts



NOTE: If a motor mount bolt location lands on a flat head block bolt, replace the M10 flathead and 3/8 bolt with the provided extra M10 SHCS and washer. Bolt through the motor mount and adapter plate into the block.

Figure 4: Finished assembly

4.0 CONGRATULATIONS

[Back to Table of Contents](#)

Congratulations on completing your project! We know you will get many years of enjoyment from your project. Please join the group, [Team Speedtech](#), on Facebook. Team Speedtech is a community of customers, dealers, and factory employers that have a passion for pro touring muscle cars and are using Speedtech Performance products. You can ask questions and get advice from the group members and share your experience. Everyone enjoys seeing the videos and pictures during the progress of your project and Speedtech encourages you to share them!

Thank you for choosing Speedtech Performance and entrusting us with your LS engine mount adaptors for your custom muscle car.

Speedtech Performance, LLC
4160 S. River Rd.
St George UT, 84770
(435) 628-4300