

# Instruction Guide

T-56 Transmission Tunnel Cover  
67-81 F-Body



***Speedtech***  
**PERFORMANCE**

CHASSIS - SUSPENSION - PRO TOURING - AUTOCROSS - DRAG RACING - CUSTOM BUILDS

435.628.4300 [SPEEDTECHPERFORMANCE.COM](http://SPEEDTECHPERFORMANCE.COM)    

4160 S. RIVER RD, ST. GEORGE, UT 84790



*Figure 1: 1972 Nova features our transmission tunnel [photo by Charles Huffhines]*

Congratulations on the purchase of your new Speedtech Performance transmission tunnel. Use only approved and appropriately rated jack and jack stands, and be sure to take all safety precautions required to complete the job safely and correctly. If you have uncertainties, seek the assistance of a highly qualified workshop to assist you.

Read and understand all instructions thoroughly before you begin. Your main assembly and set up of your new transmission tunnel can be done in a home garage with hand tools and basic welding equipment.

Speedtech enjoys seeing the progress our customers are making as they work through their builds. Join the group, [Team Speedtech](#), on Facebook and share your pictures and your story.

Speedtech Performance sends you best wishes for your project!

## TABLE OF CONTENTS

<b>1.0</b>	<b>GENERAL INFORMATION.....</b>	<b>4</b>
1.1	THIS GUIDE.....	4
1.2	OVERVIEW.....	4
1.3	TOOLS.....	4
<b>2.0</b>	<b>CHECK IN PARTS AND HARDWARE.....</b>	<b>4</b>
2.1	CHECKING IN THE ORDER.....	4
2.2	CHECK IN TABLES.....	5
<b>3.0</b>	<b>GETTING STARTED.....</b>	<b>5</b>
3.1	LEVELING AND SUPPORT.....	5
3.2	DISCONNECT BATTERY.....	5
3.3	CARPET REMOVAL.....	5
<b>4.0</b>	<b>CUTTING AND MOCK UP.....</b>	<b>6</b>
4.1	MOCK UP.....	6
4.2	CUTTING.....	7
4.3	SHIFTER HOLE.....	7
<b>5.0</b>	<b>INSTALLATION.....</b>	<b>8</b>
<b>6.0</b>	<b>FINAL ASSEMBLY.....</b>	<b>9</b>
<b>7.0</b>	<b>CONGRATULATIONS.....</b>	<b>10</b>

## **1.0 GENERAL INFORMATION**

[Back to Table of Contents](#)

### **1.1 THIS GUIDE**

Thank you for purchasing your new Speedtech Performance transmission tunnel. Read through all instructions thoroughly before beginning and take all safety precautions required to do the job carefully and correctly. If you have uncertainty, seek the assistance of a highly qualified workshop.

The following instructions are intended for professional installers and are guidelines only. Speedtech Performance assumes no responsibility for the installation of any of its products installed by others. All products are intended to be installed by qualified professionals.

### **1.2 OVERVIEW**

These instructions outline the ExtReme transmission tunnel. Photos in the instruction process may vary slightly from your exact operation. For example, in this guide we have only used pictures of the Transmission Tunnel for the early Camaro. Your application may have a slightly different shape, but the part is functionally the same and is installed in the same manner described.

### **1.3 TOOLS**

Installation of the Speedtech Performance transmission tunnel can be done on the floor with a basic welder, a cut off tool, and basic hand tools.

Additional things to have before you start:

- Welder
- Drill
- Grinder
- Floor Stands
- Floor Jack

## **2.0 CHECK IN PARTS AND HARDWARE**

[Back to Table of Contents](#)

### **2.1 CHECKING IN THE ORDER**

Check in your order as soon as possible. To check in the order, Speedtech has provided a table which can be used as a check list, as displayed in figure 2. All bolts and nuts are NF unless otherwise noted. Hardware comes in several boxes. If you discover anything missing from your order, call your authorized dealer as soon as possible.

## 2.2 CHECK IN TABLES

X	#	Description	Size
	1	Transmission Tunnel	T-56

Figure 2: Check in table with amount, description, and size

## 3.0 GETTING STARTED

[Back to Table of Contents](#)

### 3.1 LEVELING AND SUPPORT

**WARNING:** The vehicle should be on a level surface before you start.

Jack up and properly support the vehicle's frame. Remove the front wheels. For cars with drop off style rotors, reinstall one lug nut if needed to prevent the rotor from falling off.

### 3.2 DISCONNECT BATTERY

It is best to disconnect the battery since you will be cutting and welding the floor and tunnel of the car.

### 3.3 CARPET REMOVAL

Although not completely necessary, Speedtech has found it is easiest and safest to remove the carpet from the car to perform this installation.

## 4.0 CUTTING AND MOCK UP

[Back to Table of Contents](#)

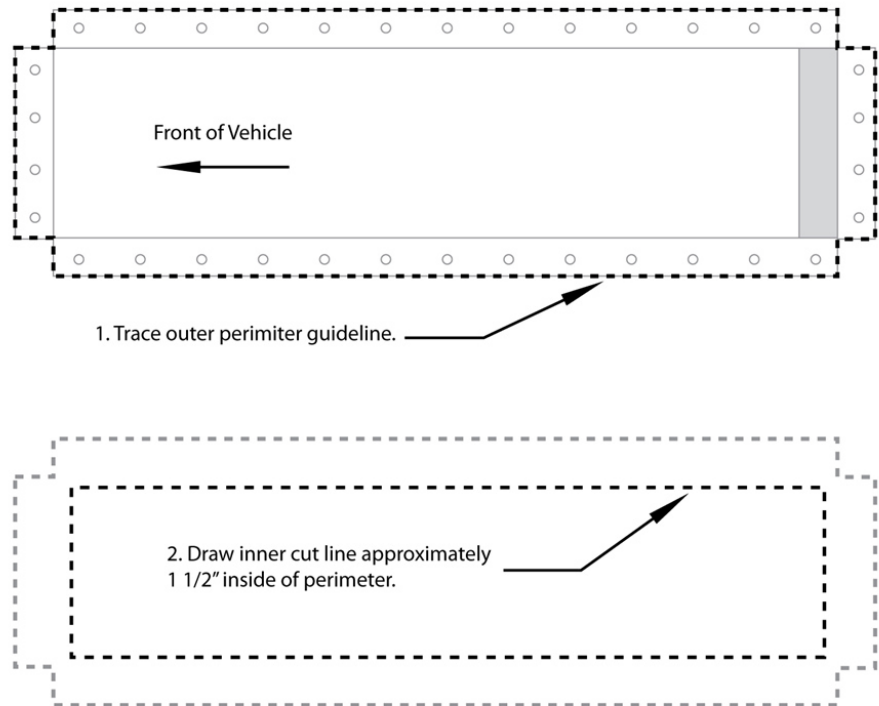
### 4.1 MOCK UP

Find the final location for the engine and transmission fitment within the car's frame.

Find and mark the shifter arm location on the transmission tunnel on the interior of the car.

Considering where the shifter will be located, use your tunnel cover and mock up its location on the interior of the car.

Trace the outside of the tunnel cover and set it aside.



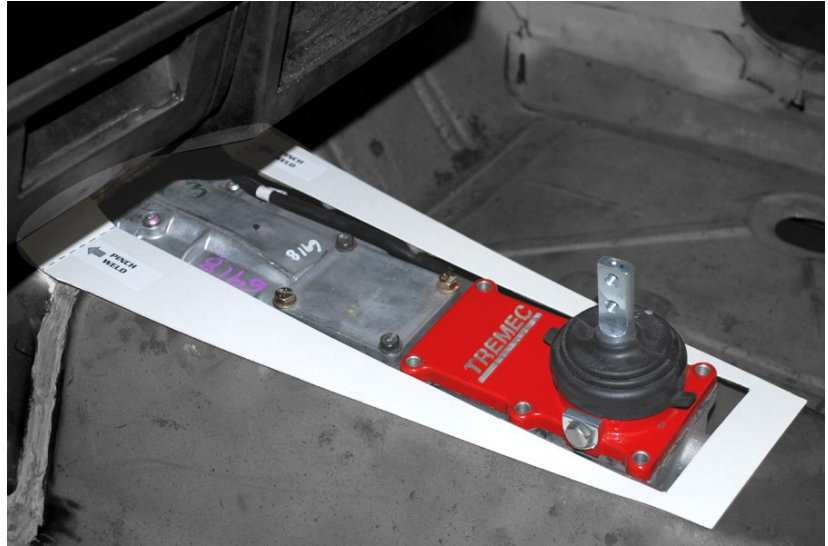
*Figure 3: Mock up*

Next, draw another line approximately 1 1/2" to the inside of the first line. These will be your cut lines. Do not cut at the outer perimeter line.

**NOTE:** More measurements are displayed in figure 7.

## 4.2 CUTTING

Once the cut lines are laid out, take the necessary safety precautions and carefully cut out the rectangular portion of the tunnel within your marks. Test fit the transmission in place. Because of model differences and factory tolerances, further trimming may be required. Be sure there is at least a small amount of clearance to allow the drive train to flex without hitting the floor. The end result should look something like figure 4.

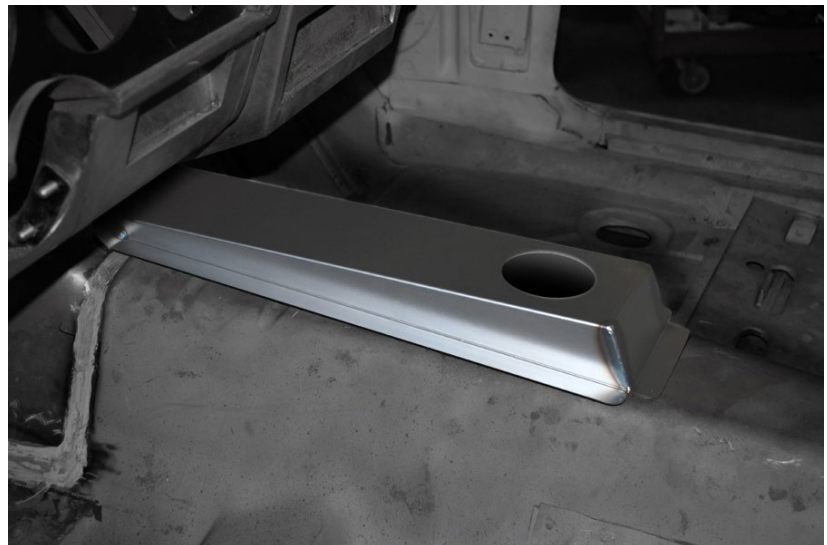


*Figure 4: End result of cutting*

## 4.3 SHIFTER HOLE

Next, you will need to mark the tunnel cover for the shifter location in relation to the cover's position on the transmission tunnel. Cut a hole approximately 3.5" in diameter for the T-56 boot to fit through. Speedtech recommends splitting and wrapping vacuum tubing around the diameter of the hole to prevent gouging the shifter boot.

Next, lay the tunnel cover over the transmission. With a plastic mallet tap the flanges down so that they mate up to the angle of the floor pan. Reposition the shifter boot as necessary to seal off the round hole.



*Figure 5: Shifter hole*

## 5.0 INSTALLATION

[Back to Table of Contents](#)

As the area of the floor pan covered by the tunnel cover and the inside of the tunnel cover may be exposed to outside elements, Speedtech recommends protecting these areas with a high-quality paint or other surface protector.

Next, attach the tunnel cover securely to the floor. Speedtech recommends using a high-quality seam sealer on areas where the tunnel cover makes contact with the floor pan, and in any area where there may be gaps because of floor pan shape.



*Figure 6: Installation*

## 6.0 FINAL ASSEMBLY

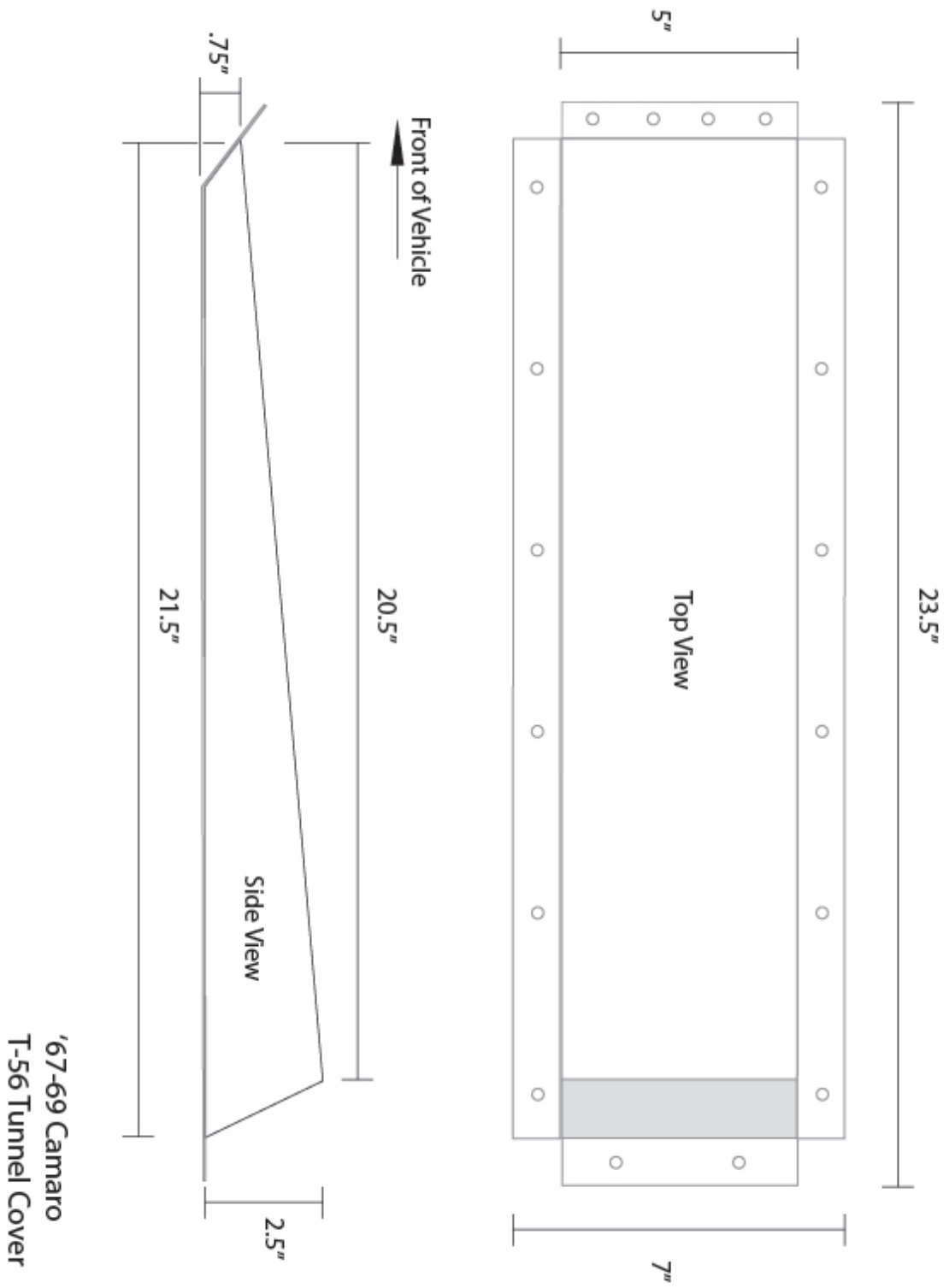


Figure 7: Diagram of the finished assembly

## 7.0 CONGRATULATIONS

[Back to Table of Contents](#)

Congratulations on completing your project! We know you will get many years of enjoyment from your project. Please join the group, [Team Speedtech](#), on Facebook. Team Speedtech is a community of customers, dealers, and factory employers that have a passion for pro touring muscle cars and are using Speedtech Performance products. You can ask questions and get advice from the group members and share your experience. Everyone enjoys seeing the videos and pictures during the progress of your project and Speedtech encourages you to share them!

Thank you for choosing Speedtech Performance and entrusting us with your tunnel cover for your custom muscle car.

Speedtech Performance, LLC  
4160 S. River Rd.  
St George UT, 84770  
(435) 628-4300