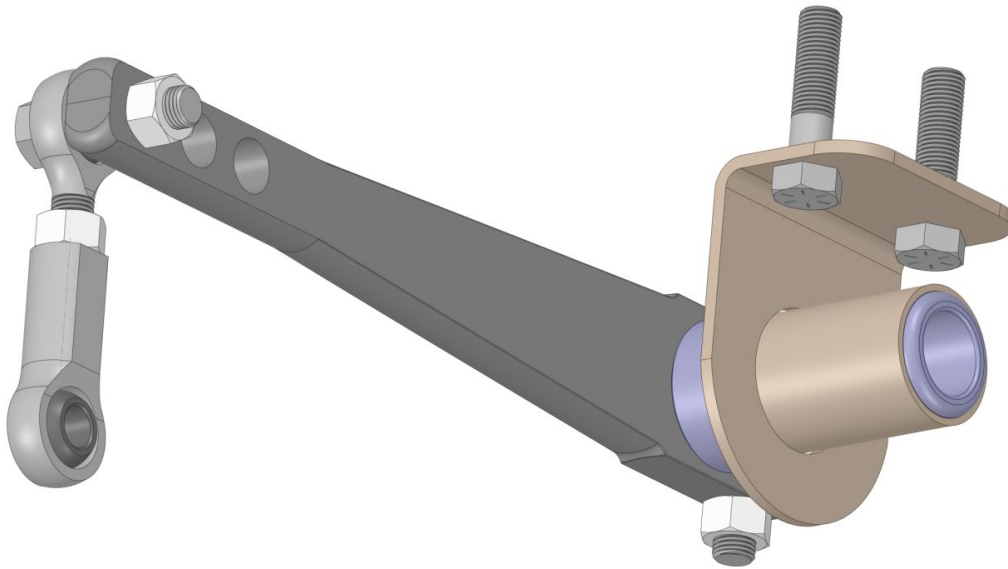


Instruction Guide

Rear Sway Bar Kit - Optional
64-72 A-Body



Speedtech
PERFORMANCE

CHASSIS - SUSPENSION - PRO TOURING - AUTOCROSS - DRAG RACING - CUSTOM BUILDS

435.628.4300 SPEEDTECHPERFORMANCE.COM    

4160 S. RIVER RD, ST. GEORGE, UT 84790



Figure 1: 1969 Chevelle features our A-Body ExtReme Chassis [photo by @boy_andy]

Congratulations on the purchase of your new Speedtech Performance torque arm rear sway bar. Use only approved and appropriately rated jack and jack stands, and be sure to take all safety precautions required to complete the job safely and correctly. If you have uncertainties, seek the assistance of a highly qualified workshop to assist you.

Read and understand all instructions thoroughly before you begin. Your main assembly and set up of your new torque arm rear sway bar can be done in a home garage with hand tools.

Speedtech enjoys seeing the progress our customers are making as they work through their builds. Join the group, [Team Speedtech](#), on Facebook and share your pictures and your story.

Speedtech Performance sends you best wishes for your project!

TABLE OF CONTENTS

1.0	GENERAL INFORMATION.....	4
1.1	THIS GUIDE	4
1.2	OVERVIEW	4
1.3	TOOLS	4
2.0	CHECK IN PARTS AND HARDWARE.....	5
2.1	CHECKING IN THE ORDER	5
2.2	CHECK IN TABLES	5
3.0	INSTALLATION.....	5
4.0	CONGRATULATIONS	7

1.0 GENERAL INFORMATION

[Back to Table of Contents](#)

1.1 THIS GUIDE

Thank you for purchasing your new Speedtech Performance rear sway bar. Read through all instructions thoroughly before beginning and take all safety precautions required to do the job carefully and correctly. If you have uncertainty, seek the assistance of a highly qualified workshop.

The following instructions are intended for professional installers and are guidelines only. Speedtech Performance assumes no responsibility for the installation of any of its products installed by others. All products are intended to be installed by qualified professionals.

1.2 OVERVIEW

These instructions outline the A-Body rear sway bar kit. Photos in the instruction process may vary slightly from your exact operation. For example, in this guide we have only used pictures of the A-Body rear sway bar kit. Your application may have a slightly different shape; the part is functionally the same and is installed in the same manner described.

We recommend you inspect all of your car's suspension components prior to installation of our parts, such as bushings and brake lines which may be worn and could cause adverse effects. We suggest you replace the upper axle housing bushings with factory replacement rubber bushings, and any parts as necessary. This will allow the correct amount of movement that the rear suspension requires.

The Speedtech coilover bracket is designed to slip over and bolt on to the existing shock bracket. Note that for determining left and right sides, the shock mount tabs are located inward.

1.3 TOOLS

Installation of the Speedtech Performance A-Body rear sway bar kit can be done on the floor with simple hand tools.

Additional things to have before you start:

- Socket / Wrench
- Floor Stands
- Floor Jack

2.0 CHECK IN PARTS AND HARDWARE

[Back to Table of Contents](#)

2.1 CHECKING IN THE ORDER

Check in your order as soon as possible. To check in the order, Speedtech has provided a table which can be used as a check list, as displayed in figure 2. All bolts and nuts are NF unless otherwise noted. Hardware comes in several boxes. If you discover anything missing from your order, call your authorized dealer as soon as possible.

2.2 CHECK IN TABLES

X	#	Description	Size
	1	Sway Bar	
	2	Sway Bar Mount Brackets	
	2	Cap Screw Hex	3/8 x 1 1/2
	2	Shoulder Bolt	3/8 x 1
	2	Nylock Nut	3/8
	2	Nylock Nut	5/16
	2	Hex Nut	3/8 NF
	2	Rode End	
	4	Cap Screw Hex	3/8 x 3/4 NF
	2	Cap Screw Hex	1/4 x 2 NF
	2	Nylock Nut	1/4 NF
	4	Flat Washer	1/4

Figure 2: Check in table with amounts, descriptions, and sizes

3.0 INSTALLATION

[Back to Table of Contents](#)

The bar is installed between the two separate mounting brackets/bushings.

You will need to loosely assemble the parts and lift up into position.

Next, bolt the brackets to the chassis.

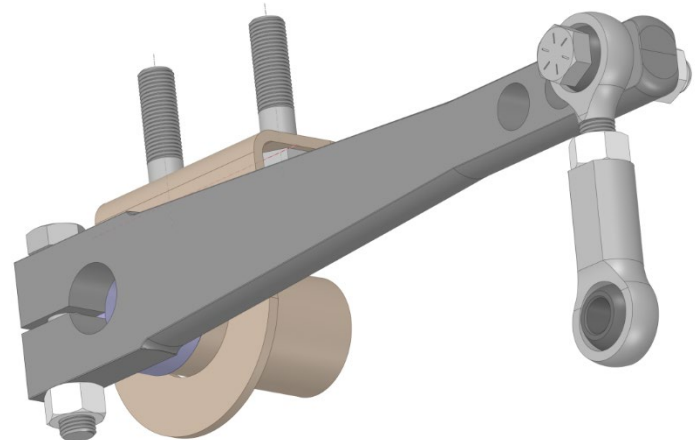


Figure 3: Installation; model one

The end links will attach to the tabs on the front side of the rear end.

NOTE: These will already have been welded on when you ordered the chassis, even if you did not order the rear sway bar.

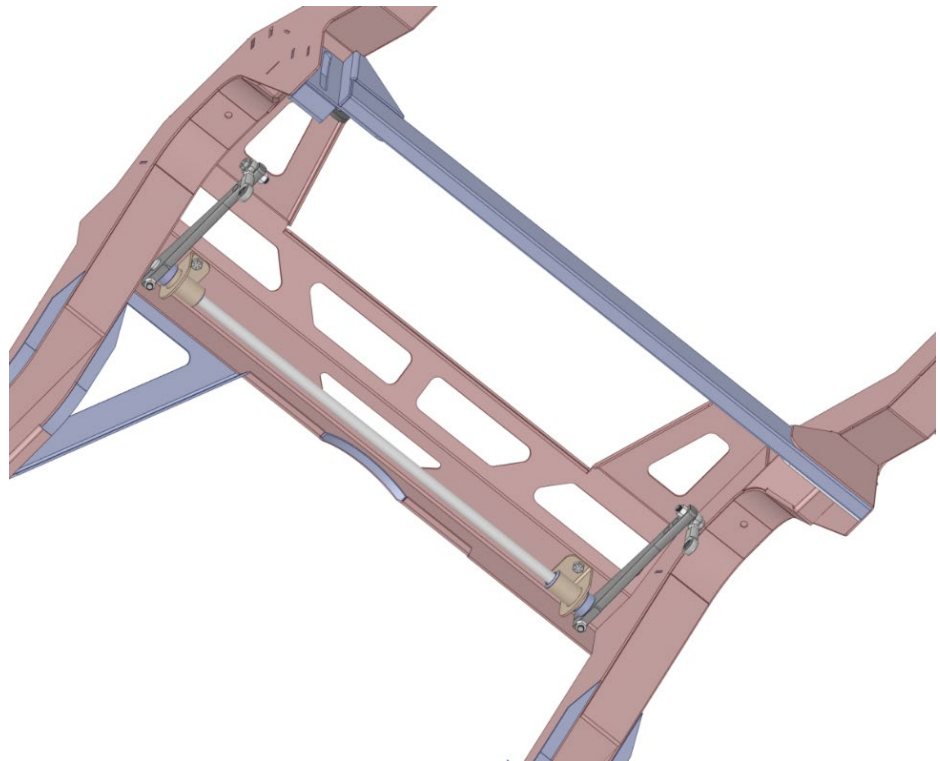
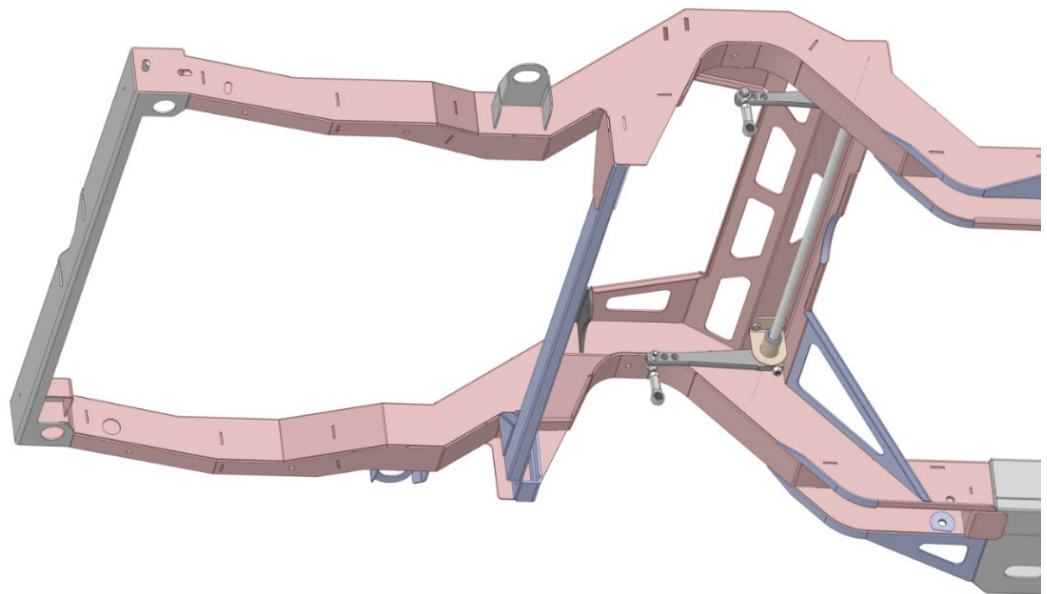


Figure 4: Two models of the finished assembly



4.0 CONGRATULATIONS

[Back to Table of Contents](#)

Congratulations on completing your project! We know you will get many years of enjoyment from your project. Please join the group, [Team Speedtech](#), on Facebook. Team Speedtech is a community of customers, dealers, and factory employers that have a passion for pro touring muscle cars and are using Speedtech Performance products. You can ask questions and get advice from the group members and share your experience. Everyone enjoys seeing the videos and pictures during the progress of your project and Speedtech encourages you to share them!

Thank you for choosing Speedtech Performance and entrusting us with your rear sway bar for your custom muscle car.

Speedtech Performance, LLC
4160 S. River Rd.
St George UT, 84770
(435) 628-4300